



Byrd's Adventure Center

BYRDSADVENTURECENTER.COM

479-667-4066 OZARK, ARKANSAS

14 miles North of I-40 on Highway 23 then 6 miles East on Highway 215

Byrd's Adventure Center Area Map

WELCOME TO BYRD'S

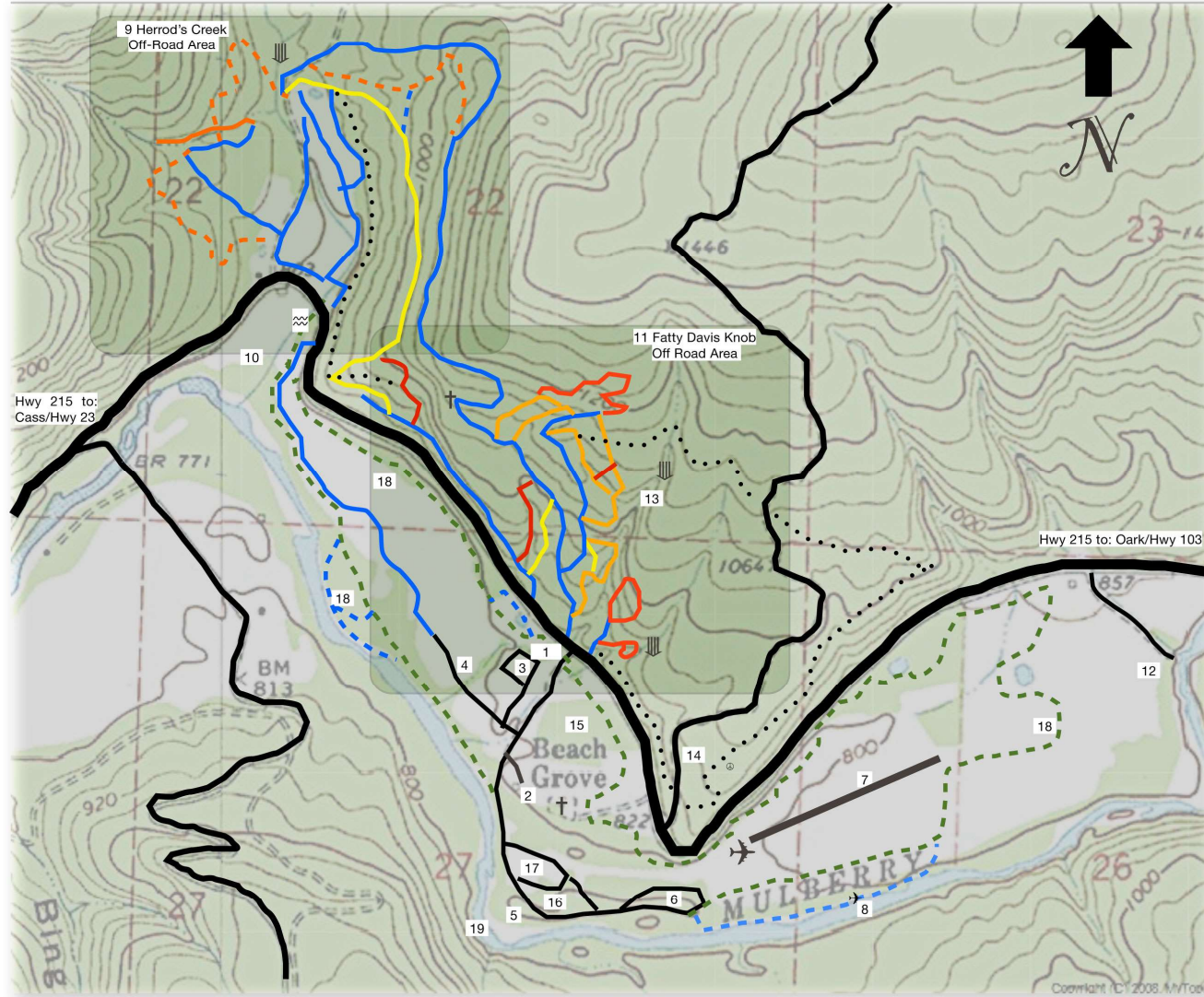
Here at Byrd's Adventure Center we have everything you need for outdoor fun. Ride over 30 miles of ATV, Jeep and Mountain Bike trails in our Private Off-road Park or use us as a starting point to the Million+ acre Ozark National Forest. Paddle the exciting Mulberry River in a Canoe, Raft or Sit-on-Top Kayak. We offer Guided and Non-Guided Trips, Boat Rentals, Shuttles and a Gear Shop. The Mulberry River and its tributaries sport a healthy Small Mouth Bass population and is a Fly Fishers' "Dream Stream." A Guided Oar-Frame Raft Trip down the river is a great way to enjoy the scenery and focus on fish. We host many events through the year including Races, Concerts, Parties, Fly-ins and Rallies. Our 2500-foot Airstrip has a taxiway into Pilot Camp, a private Riverside Campsite with tie-downs. Book a Zip-Line Tour, Rock Climbing or River Skills Class with one of our Nationally Certified Instructors. Our Campground features over 150 sites with 30 and 50-amp service, Primitive Camping, Cabin Rentals, Large Shower House (Remodeled in 2010), Covered Pavilions, Two large Stages, Playground, Amazing Swimming Hole, General Store and Hiking Trails. Ask about booking Byrd's for your Private event.

Byrd's Adventure Center

Come See if the Rumors are True ;)



ByrdsAdventureCenter.com



Map Key

- 1 Main Entrance
- 2 Office and General Store
- 3 Green Meadow Campground
- 4 Meadow Lane Campground
- 5 Riverfront Campground
- 6 Overflow Primitive Camping
- 7 International Hayfield Alrstrip
- 8 Pilot Camp Primitive Camping
- 9 Herrod's Creek Off Road Area
- 10 Confluence Primitive Camping
- 11 Fatty Davis Knob Off Road Area
- 12 Whoop-N-Holler Day-Use Area
- 13 Canopy Canyon (Hiking only)
- 14 Beech Grove Road
- 15 Beech Grove Primitive Camping
- 16 Bathroom and Shower House
- 17 Stages and Pavilion
- 18 Perimeter Trail (4.5 miles)
- 19 Campground Swimming Hole
- Black Lines: Paved and dirt roads
- Blue Lines: Access Trails (4X4)
- Yellow Lines: Moderate Trails (4X4)
- Orange Lines: Difficult Trails (4X4)
- Red Lines: Extreme Trails (4X4)
- Dashed Green: Challenging ATV Trail
- Dashed Blue: ATV Trail Spur
- Dashed Orange: Difficult ATV Trail
- Dotted Line: Mountain Bike/Hiking